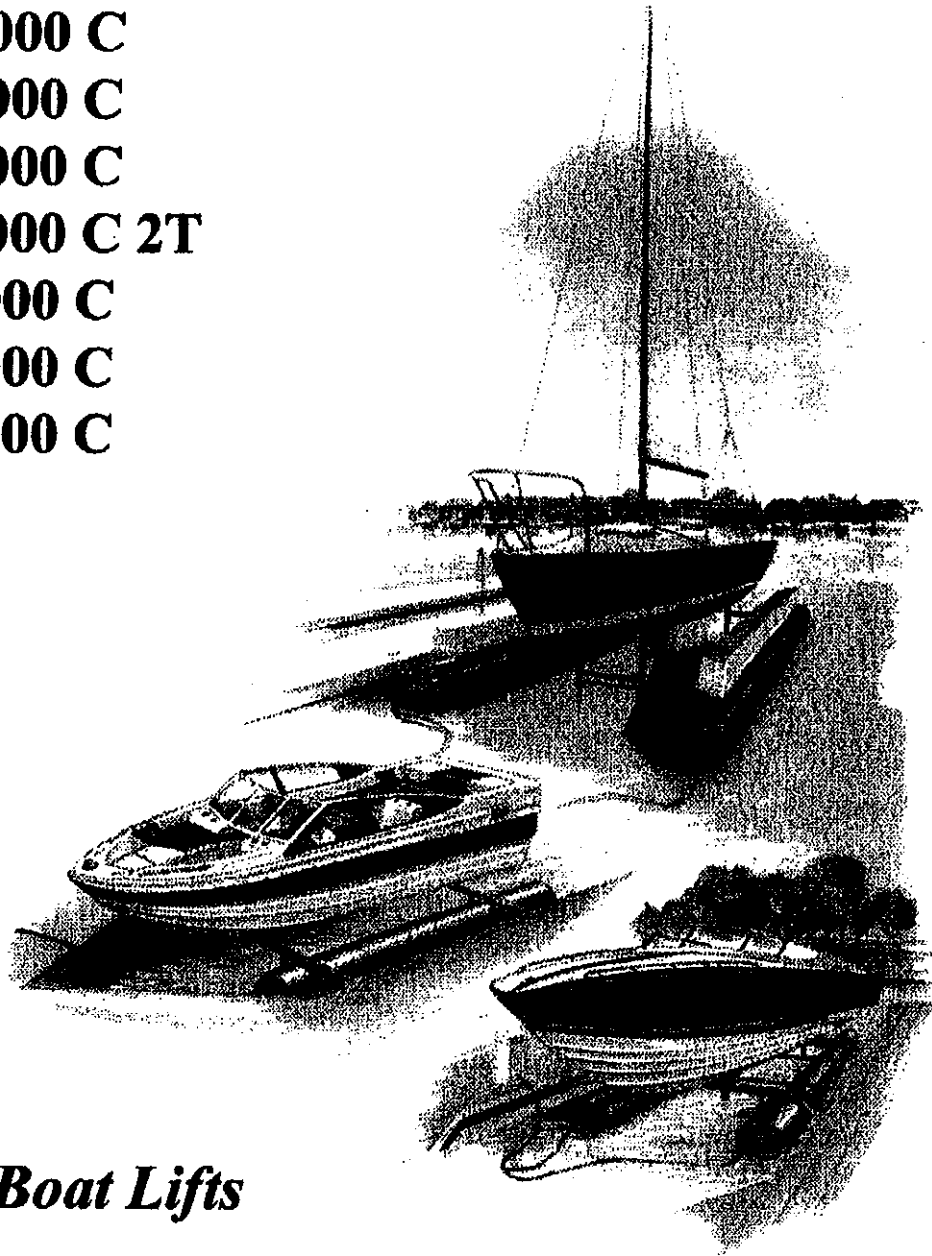
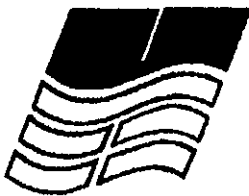


INSTALLATION MANUAL

MODEL 4000 C
6000 C
8000 C
8000 C 2T
10000 C
12000 C
15000 C



HydroHoist Boat Lifts



P.O. Box 1286 / Claremore, OK 74018
Phone (918) 341-6811

IMPORTANT SAFETY NOTICE

To ensure consumer safety, HydroHoist International Inc. has included Ground Fault Circuit Interrupters (GFCI) with all new lifts. This GFCI is designed to protect the user. Its removal is in direct conflict with the recommendation of the Consumer Products Safety Commission and could result in a severe electrical shock, hazard or death.

CAUTION

PLEASE READ AND UNDERSTAND ALL INSTRUCTIONS INCLUDED IN THIS MANUAL BEFORE ASSEMBLING LIFT.

Assembly, installation, or repair of HydroHoist boat lifts should only be performed by an authorized HydroHoist technician. Assembly, installation, or repair performed by any others could result in personal injury, or in property damage to the lift, boat, or dock.

DISCLAIMER

IN THE EVENT THAT ANY UNAUTHORIZED PERSON ATTEMPTS TO ASSEMBLE, INSTALL, OR REPAIR A HYDROHOIST BOAT LIFT, HYDROHOIST INTERNATIONAL INC. HEREBY DISCLAIMS ANY AND ALL WARRANTIES EXPRESSED OR IMPLIED, INCLUDING BUT NOT LIMITED TO HYDROHOISTS NORMAL LIFT WARRANTY, AND THE IMPLIED WARRANTIES OF MERCHANTABILITY AND FITNESS FOR A PARTICULAR PURPOSE.

IF YOU HAVE ANY QUESTIONS ABOUT THE ASSEMBLY OF THE LIFT PLEASE CONTACT:

**HYDROHOIST INTERNATIONAL, INC.
CUSTOMER SERVICE
1-800-825-3379**

***** DISCLAIMER *****

***** CAUTION *****

Assembly, installation, or repair of HydroHoist boat lifts should only be performed by an authorized HydroHoist technician. Assembly, installation, or repair performed by any others could result in personal injury, or in property damage to the lift, boat, or dock.

IN THE EVENT THAT ANY UNAUTHORIZED PERSON ATTEMPTS TO ASSEMBLE, INSTALL, OR REPAIR A HYDROHOIST BOAT LIFT, HYDROHOIST INTERNATIONAL, INC. HEREBY DISCLAIMS ANY AND ALL WARRANTIES, EXPRESSED OR IMPLIED, INCLUDING BUT NOT LIMITED TO HYDROHOIST'S NORMAL LIFT WARRANTY, AND THE IMPLIED WARRANTIES OF MERCHANTABILITY AND FITNESS FOR A PARTICULAR PURPOSE.

INTRODUCTION

This manual contains the assembly, installation, adjustment, and operating instructions for Models 4000C, 6000C, 8000C, 8000C-2T, 10000C, 12000C, and 15000C HydroHoists.

All paragraphs that apply to a specific model are identified at the beginning of that paragraph (4=4000C, 8=8000C, etc.). All paragraphs identified (ALL) apply to all C models.

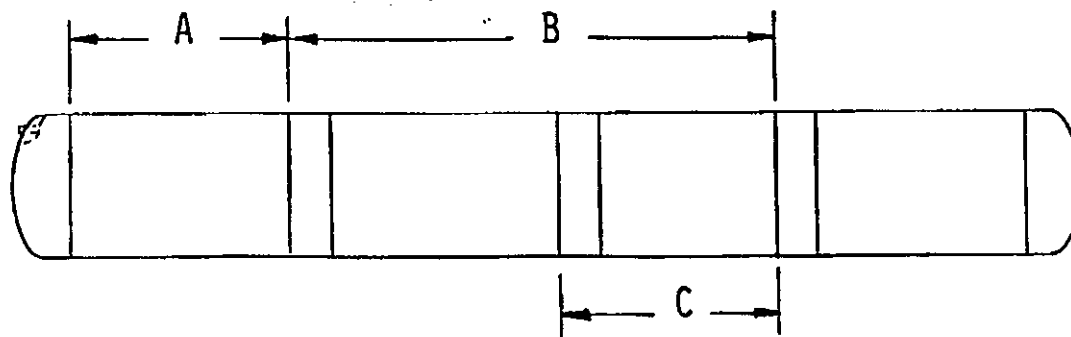
All references to left and right are considered to be looking forward from the rear of the hoist.

All numbers in parentheses () after part names refer to the item numbers on the exploded view illustration of that model.

The manual is divided into four sections as follows:

- Section I -- Assembly
- Section II -- Installation
- Section III -- Operation
- Section IV -- Do's and Don'ts

Assembly should be done on a trailer. A flat bed trailer is preferred but a boat trailer with planks across the frame will work. Make certain the trailer assembly surface is flat and level.



Model Number	No. Tanks	Tank Dimensions	Tank Style	"A" Dim.	"B" Dim.	"C" Dim.
4000C	2	24" x 16'	A	12"	123"	
6000C	2	24" x 16'	A	2"	14 5/2"	
	1	24" x 16'	A	19 1/2"	14 5/2"	
8000C	4	24" x 16'	A	2"	14 5/2"	
8000C2T	2	32" x 16'	A	2"	14 5/2"	
10000C	2	32" x 23'	B	26"	192"	84
12000C	2	32" x 23"	B	26"	192"	84"
	1	32" x 16'	A	48"	84"	
15000C	3	32" x 23'	B	26"	192"	84"

TANK BAND LOCATIONS

SECTION I

ASSEMBLY

- 1.(ALL) Inspect the slip in which the hoist will be installed.
 - a. The slip should have good, sturdy structure, either wood or steel, on each side.
 - b. The dock brackets, which will be mounted two on each side of the slip, have a minimum gripping distance of four inches and a maximum of 20 inches.
- 2.(ALL) Measure the width of the slip. Measure at both front and rear to determine that slip fingers are parallel. Make note of the width. It will be used during assembly.
- 3.(ALL) Install upper (1) and lower (2) tank brackets and attach with 3/8 x 1 1/2 inch bolts, nuts, and lockwashers. With the air injection nipple (in the front end cap) UP the upper tank brackets must be level and parallel. Locate tank brackets front to rear as shown in the matrix on next page. Do not tighten.
- 4.(ALL) Align the tanks parallel and approximately four feet narrower, outside to outside, than the slip, and with the tank bands aligned. If the hoist has more than two tanks set the middle tanks equidistant between the outside ones.
- 5.(4,6,8,8-2T) Place a long (7'11") channel (3) on the right rear tank bracket (1) with the flanges forward. Leave four holes exposed outboard of the tank bracket. Attach with two 1/2 x 1 1/2" bolts, nuts, and lockwashers. Do not tighten.
- 6.(4,6,8,82t) Place a short (6'8") channel(4) on the left rear tank bracket (1) with the flanges to the rear. Leave four holes exposed outboard of the tank bracket. Attach with two 1/2 x 1 1/2 bolts, nuts, and lock washers. Do not tighten.
- 7.(4,6,8,82t) Move the tanks in or out until the channels (3) and (4), end to end, are 15 to 18" narrower than the slip.
- 8.(6,8) Align the center tank or tanks equidistant between the outside tanks with the flanges sandwiched between the channels. Install as in previous steps.

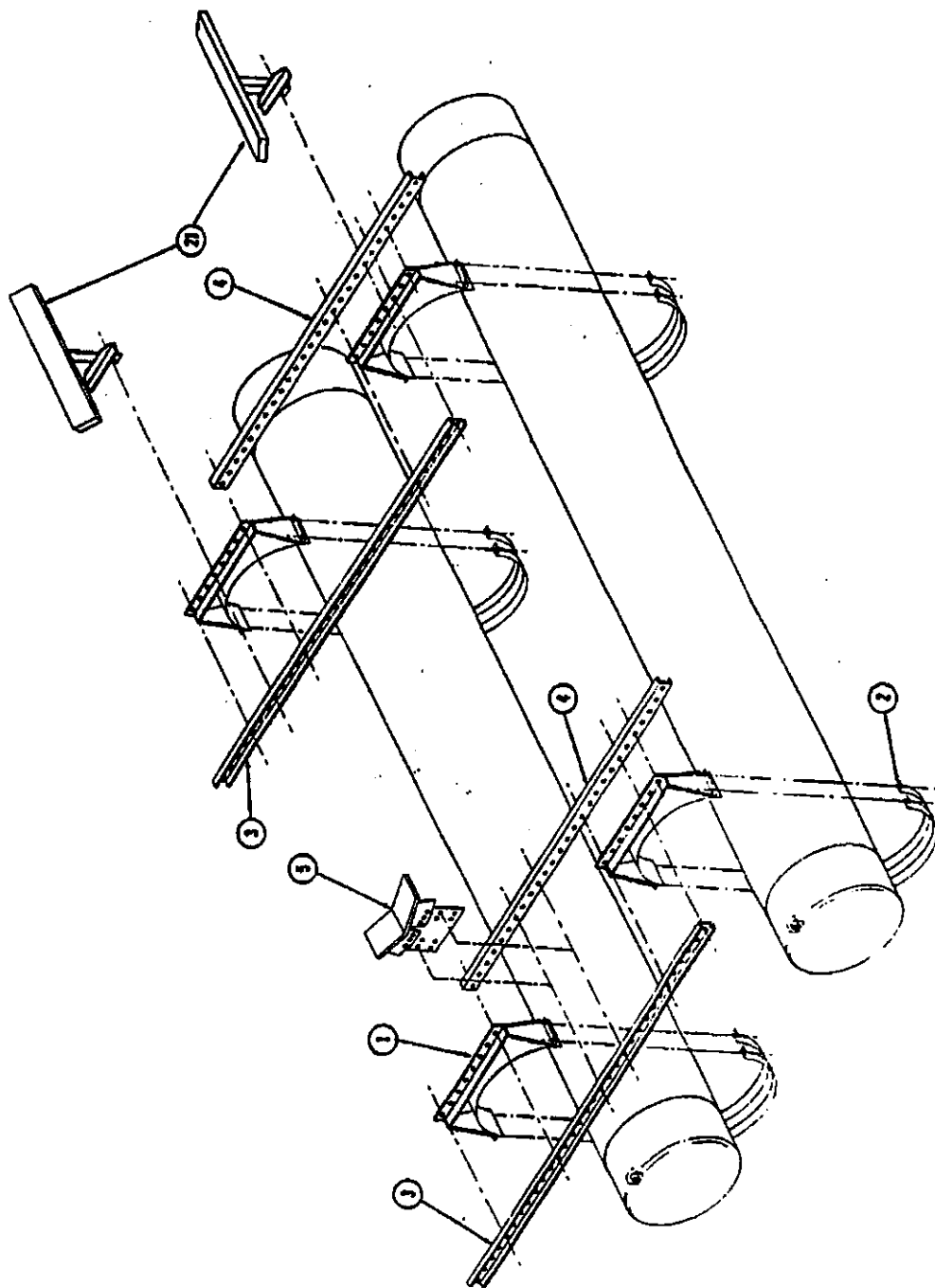
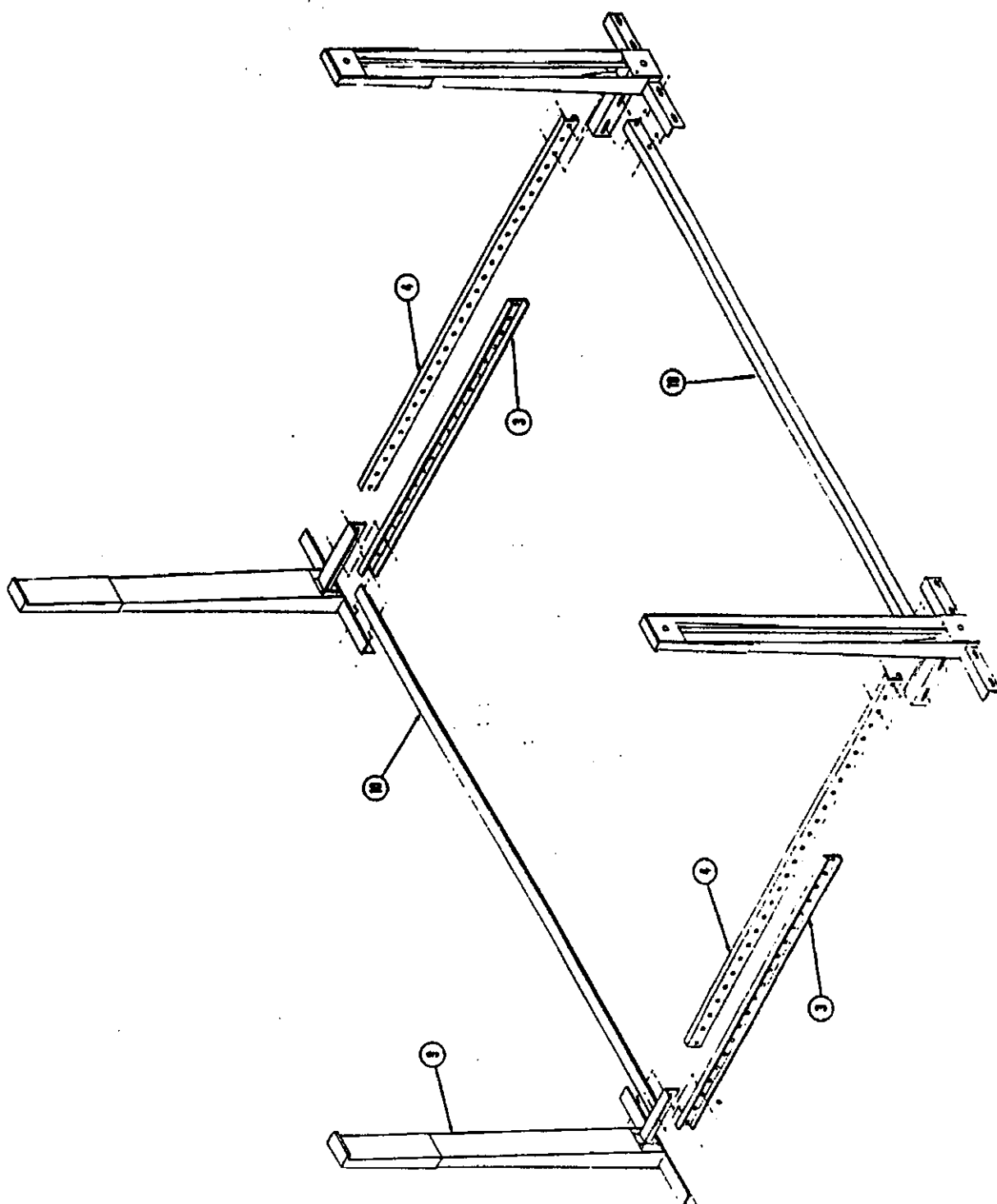


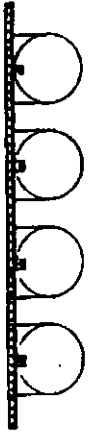
FIGURE 1, 4000C EXPLODED VIEW

(2)



CABLE POST INSTALLATION (4, 6, 8. 8-2T)

9. (4,6,8,8-2T) Repeat steps 5-8 at the front, placing the long (7'11") channel (3) on the right with flanges forward and the short (6'8") channel (4) on the left with the flanges to the rear.
10. (4,6,8,8-2T) Sandwich the vee bracket (5) between channels (3) and (4) centered at the front of the hoist. Attach with two 1/2 x 1 1/2 inch bolts, nuts, and lockwashers. Do not tighten.
11. (10,12,15) Install a keel spanner (37 1/2") channel (6) on the front and rear outboard tank brackets (1). The front spanners (6) have flanges facing rearward and the rear spanners (6) have flanges facing forward. Leave four holes exposed outboard of the tank brackets (1) and attach each spanner (6) with two 1/2 x 1 1/2 inch bolts, nuts, and lockwashers. Do not tighten.
12. (10,12,15) Move the tanks in or out until the spanners (6) end-to-end are 15" to 18" narrower than the slip.
13. (10,12,15) Install end channel (7) across the tank brackets (1) both front and rear. The rear end channel should have flanges facing rearward and the front should face forward. Attach with six 1/2 x 1 1/2 inch bolts, nuts, and lockwashers using those installed in step 11 as necessary. Do not tighten.
14. (12) Center the middle tank (8) and attach to the rear end channel (1) using three 1/2 x 1 1/2 inch bolts, nuts, and lockwashers. Do not tighten.



8000C

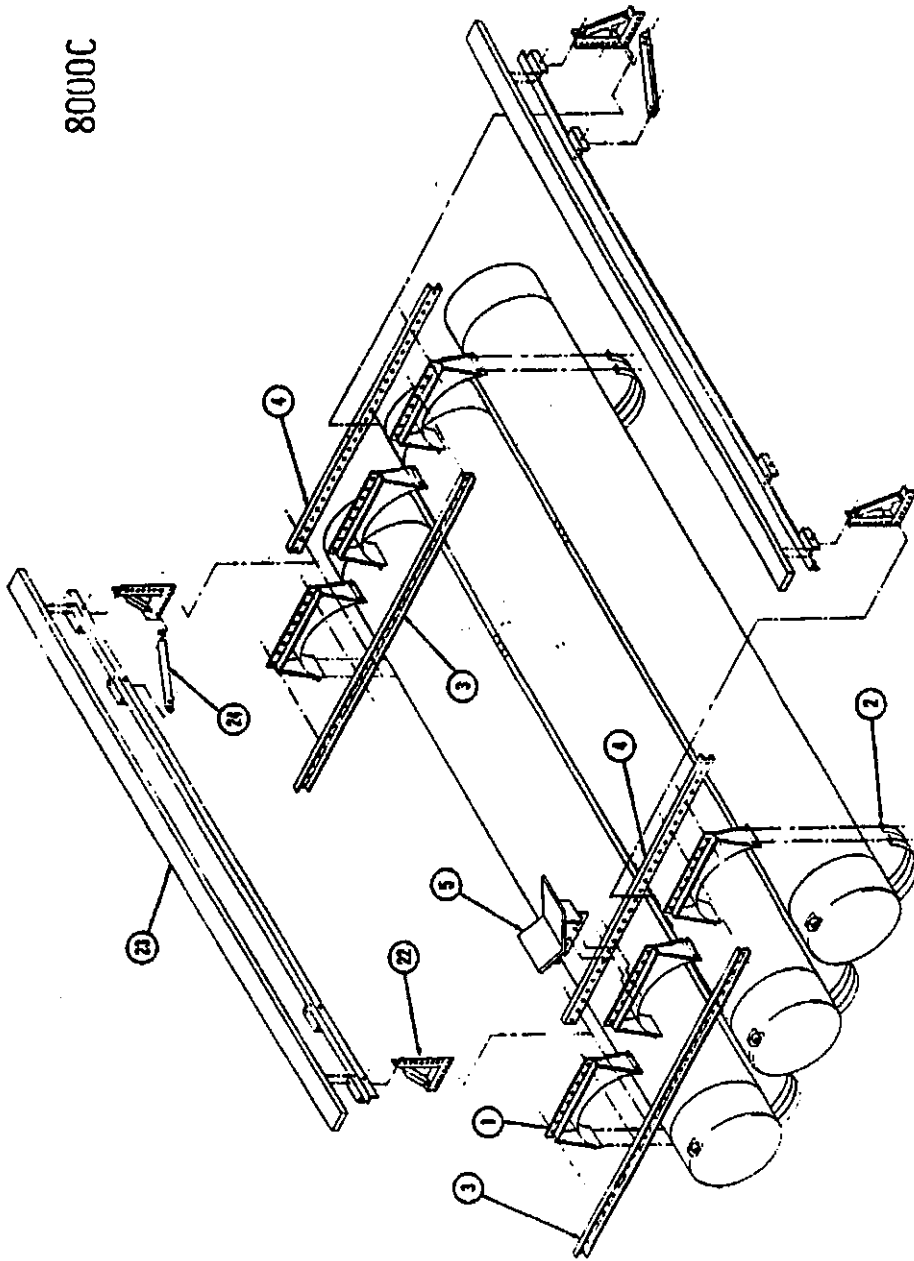


FIGURE 2, 6000C/8000C EXPLODED VIEW

- 15.(15) Center the middle tank (8) and attach to the front (7) and rear end channels using six 1/2 x 1 1/2" bolts, nuts, and lockwashers.
- 16.(10,12,15) Install a cable support assembly (9) on the end channel (6) at each corner of the hoist. Make certain that on each side of the hoist the side rail attach flanges are pointing toward each other. Attach each cable support with two 1/2 x 1 1/2 " blot, nut flatwasher and lockwasher. Flatwashers against the slot. Do not tighten.
- 17.(4,6,8,82t) Install a cable support assembly (9) on the channels (3,4) at each corner. Make certain that the bottom pulley of the cable support assembly that guides the cable across the lift is located between the front and rear channels of the lift. If not remove and install pulley on opposite side of the post. Attach cable post to end channel as in step 16.
- 18.(ALL) Install a side rail (10) between the cable supports (9) on each side of the hoist. Attach each with fou: 1/2 x 1 1/2" bolt, nut, flatwasher, and lockwasher. Do not tighten.
- 19.(10) Install a center channel mount (11) to each side channel (10) to align with the middle tank brackets. Refer to figure 4 and note that the mounts face in the opposite direction. Attach.
- 20.(10) Install a long (7' 11") center channel (14) to the right bracket (11) with the bracket between the flanges of the channel(14). Attach with one 1/2 x 1 1/2 bolt, nut, flatwasher, lockwasher.
- 21.(10) Install a short (6'8") center channel (15) to the left bracket between the flanges of the channel. Attach as in step 20.

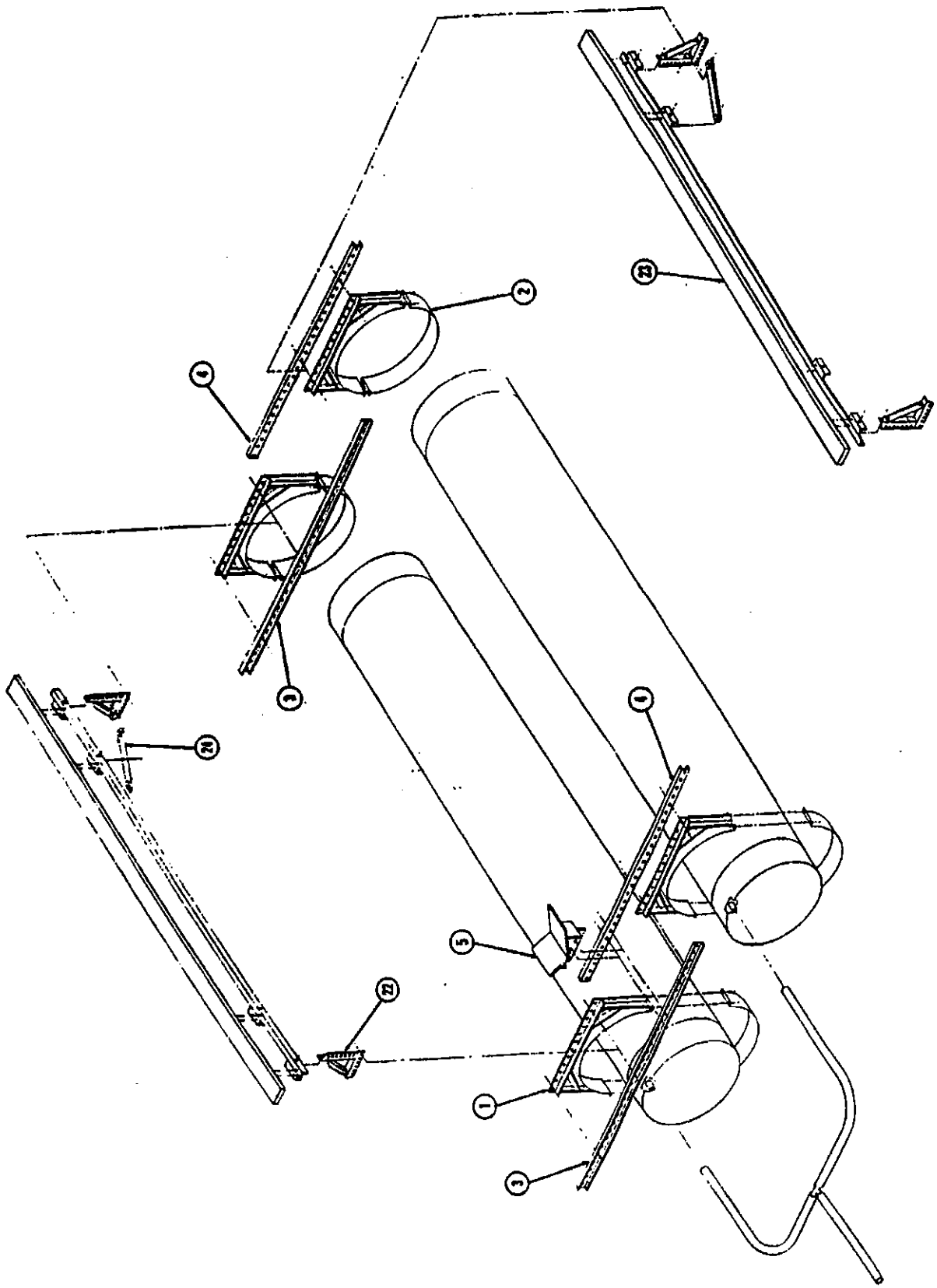


FIGURE 3, 8000C-2T EXPLODED VIEW

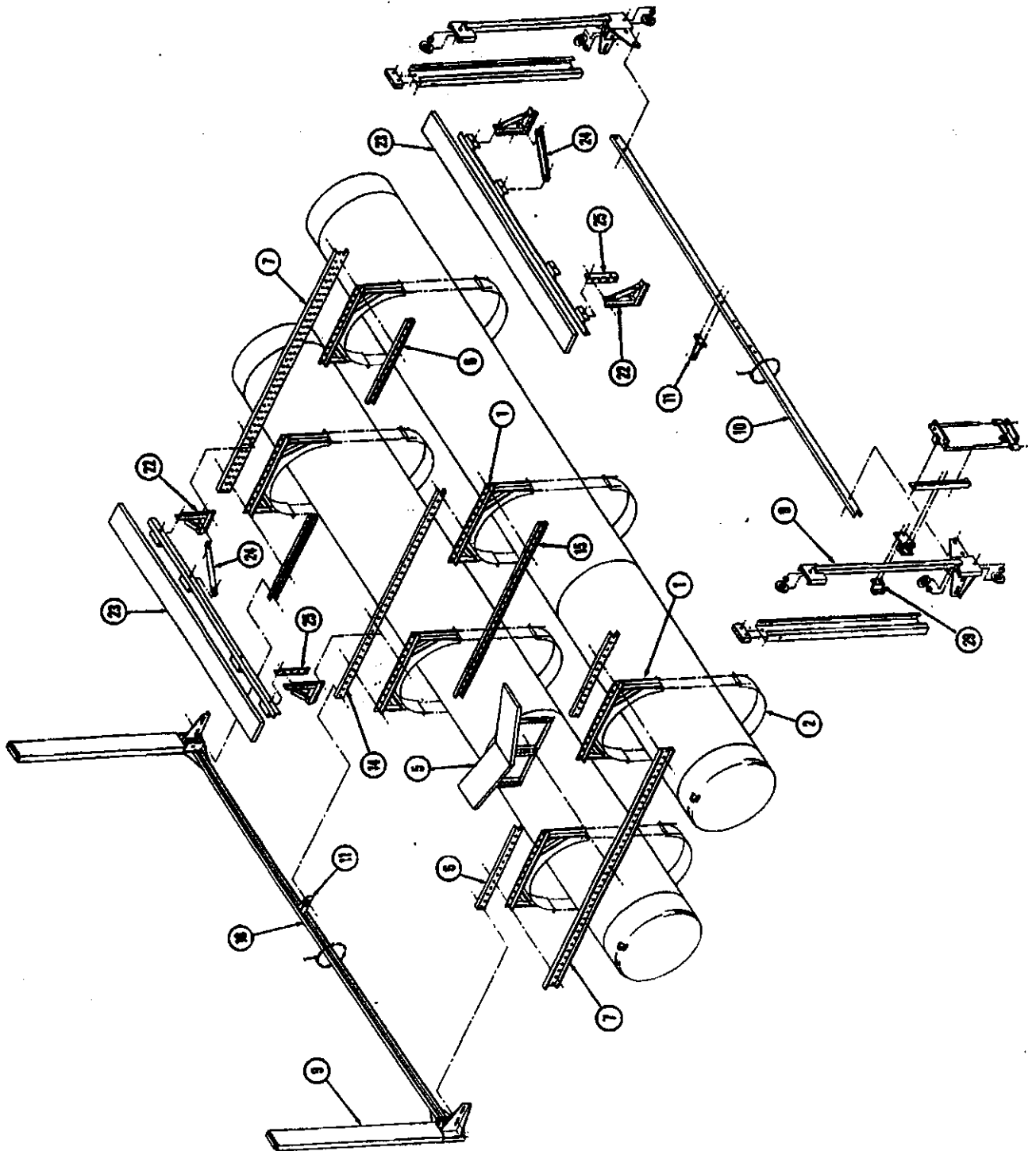


FIGURE 4. 10000C EXPLODED VIEW

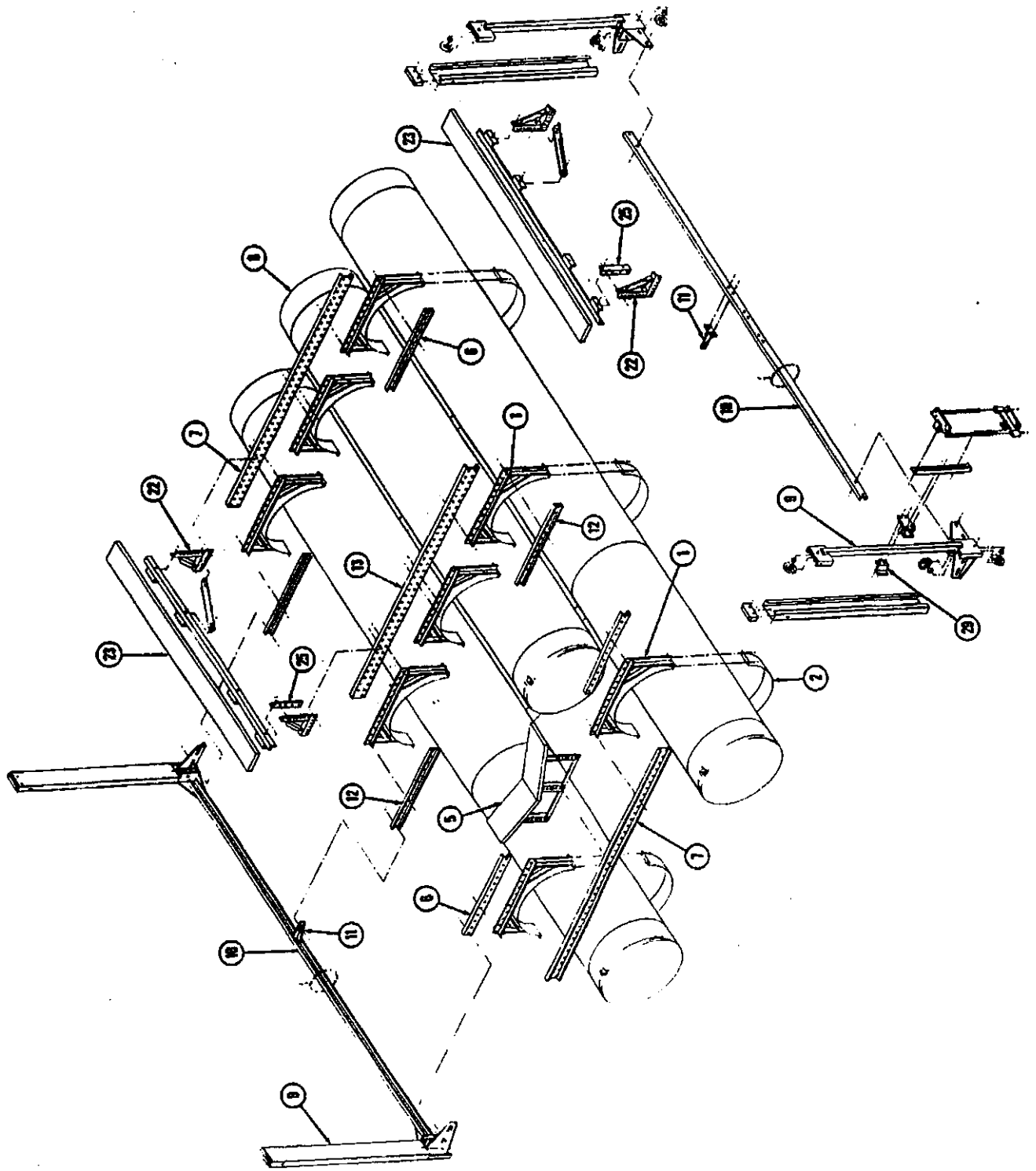


FIGURE 5. 12000C/15000C EXPLODED VIEW

22. (10) Sandwich the tank bracket (1) flanges between the channels (14) and (15) and install three 1/2 x 1 1/2 inch bolts, nuts, and lockwashers through each tank bracket and one in each end of the channel overlap. Do not tighten.
23. (12,15) Install a center channel mount (11) to each side channel (10) to align with the middle tank brackets (1). Refer to Figure 5 and note that both mounts face aft. Attach each with two 1/2 x 1 1/2 inch bolts, nuts, and lockwashers. Do not tighten.
24. (12,15) Attach a keel spanner (12) to each mount with the flanges forward. Attach each with one 1/2 x 1 1/2 inch bolt, nut, and lockwasher. Do not tighten.
25. (12,15) Install an end channel (13), across the tank brackets (1) with the flanges toward the rear. Install three 1/2 x 1 1/2 inch bolts, nuts, and lockwashers through each tank bracket (1) and the channels (12). Do not tighten.
26. (ALL) Beginning at the left rear corner, route the cable (16) as shown in Figure 6. Join the ends with turnbuckle (17), two thimbles (18), and four cable clamps (19). Leave loose and do not install the cable attach brackets (20).
27. (4) Install transom pads (21) to the rear side of the rear end channels (3 & 4). Pads should be installed with the long brace leg toward the outside of the hoist. Position pads approximately 33 to 39 inches apart, but they may have to be moved later (See step II-32). Attach the pads with 1/2 x 3 inch bolts, nuts, lockwashers, and flat washers.

28. (6,8,8-2T,10,12,15) Install four hull support columns (22) as shown in Figure 2-5 , using eight 1/2 x 1 1/2 inch bolts, nuts, and lockwashers. Make certain the flat side of each column is facing forward and the brace leg is outboard. Do not tighten.
29. (6,8,8-2T) Install the hull support pads (23) to the tops of the columns (22) with the long end to the rear and the angles toward the center of the hoist. Attach each with two 1/2 x 5 1/2 inch bolts, nuts, and lockwashers. Tighten snug.
30. (6,8,8-2T) Install a brace (24) between the rear of each pad (23) and hull support column (22). Attach to columns (22) with 1/2 x 1 1/2 inch bolt, nut, and lockwasher, and to pad with 1/2 x 5 1/2 inch bolt, nut, and lockwasher. Tighten 1/2 x 5 1/2 inch snug.
31. (10,12,15) Install a riser (25) to each forward hull support column (22) so the tops of front and rear columns will be level. Make certain bevel is down toward center of hoist. Attach each with two 1/2 x 1 1/2 inch bolts, nuts, and lockwashers.
32. (10,12,15) Install the hull support pads (23) to the tops of the columns (22) with the long angle toward the center of the hoist. Attach each with two 1/2 x 5 1/2 inch bolts, nuts, and lockwashers. Tighten snug.
33. (10,12,15) Install hull support pad braces (24) between the hull support pads (23) and the columns (22). Attach to pads with two 1/2 x 5 1/2 inch bolts, nuts, and lockwashers, and to columns with two 1/2 x 1 1/2 inch bolts, nuts, and lockwashers. Do not tighten.

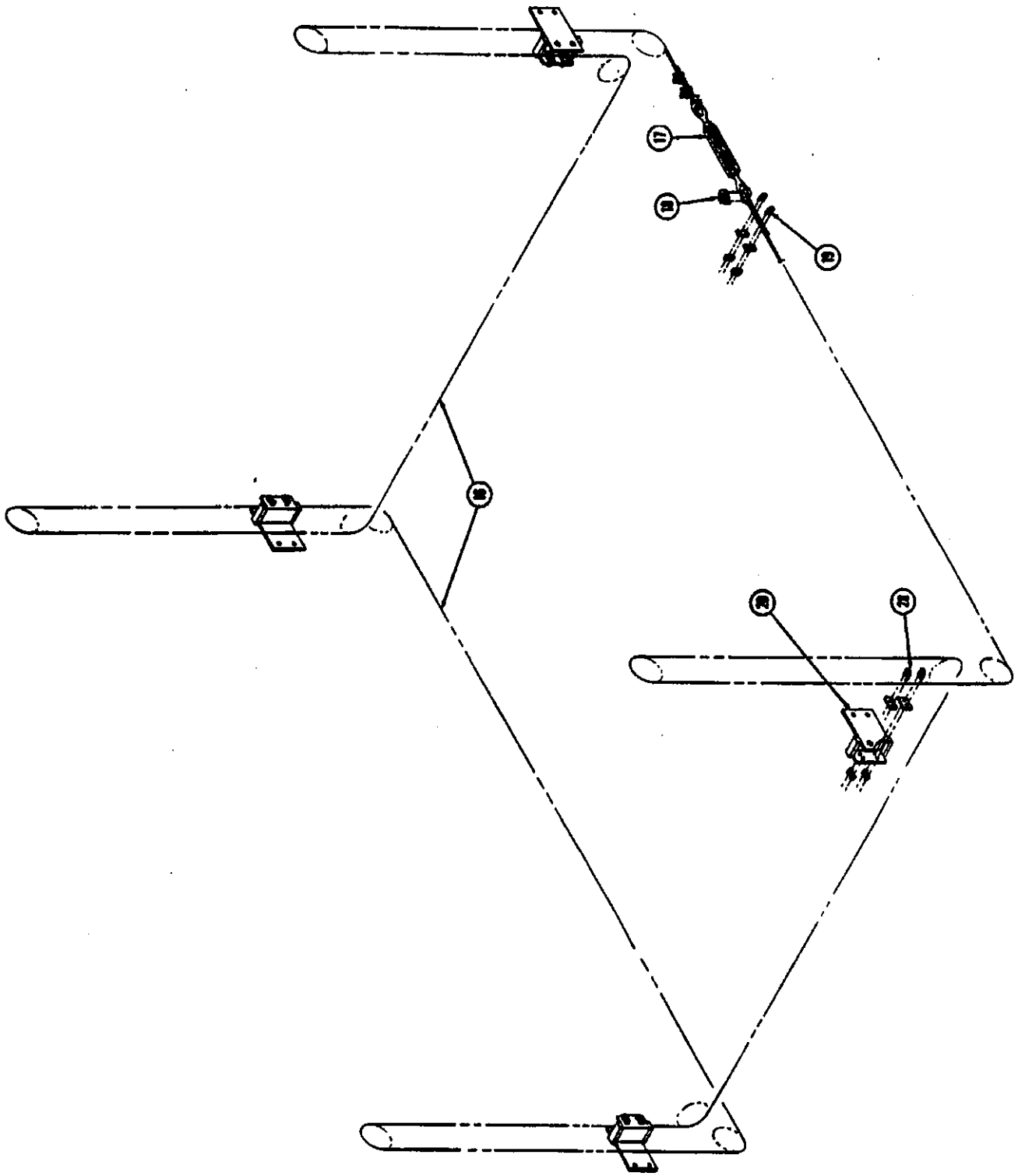
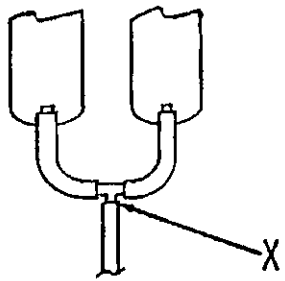
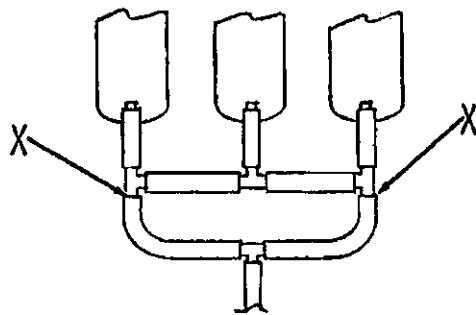


FIGURE 6. CABLE PATH

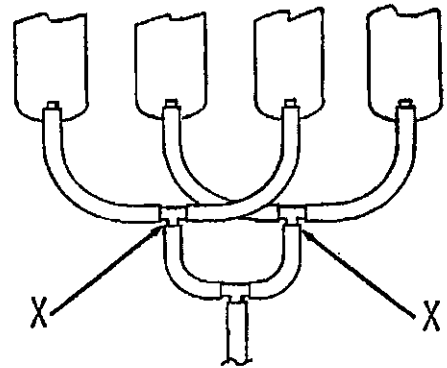
34. (10,12,15) Install the vee bracket (5) centered in the front end channel (7) using six 1/2 x 1 1/2 inch bolts, nuts, and lockwashers. Tighten to approximately 75 ft lb torque.
35. (ALL) While standing at the rear of the hoist, sight across the rear end channels to the front ones to make sure the front and rear are parallel and that there is no twist or warp in the hoist. If one corner is low, block up that tank to align the hoist.
36. (ALL) Tighten all tank band bolts to approximately 35 ft. lbs. torque. Tighten all 1/2 x 5 1/2" bolts snug. Tighten all 1/2 x 1 1/2" and 1/2 x 3 1/2" bolts to approximately 75 ft. lbs. torque.
37. (ALL) Refer to Figure 7 and make the necessary hose recon-nections between the tanks and the point marked (X) on the drawing.
38. (ALL) Cap the fittings at point (X) using crutch tips or equivalent.
39. (ALL) Attach a tether line to the hoist.
40. (ALL) Slowly back the trailer into the water to float the hoist. Do this slowly so the front of the tanks will not pivot hard into the trailer.
41. (ALL) Slowly tow the hoist to the installation location.



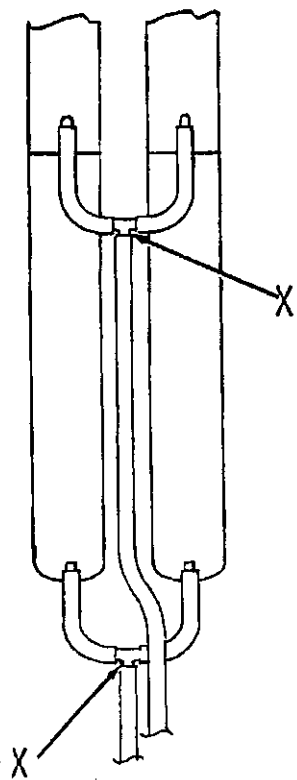
4000C
8000C-2T



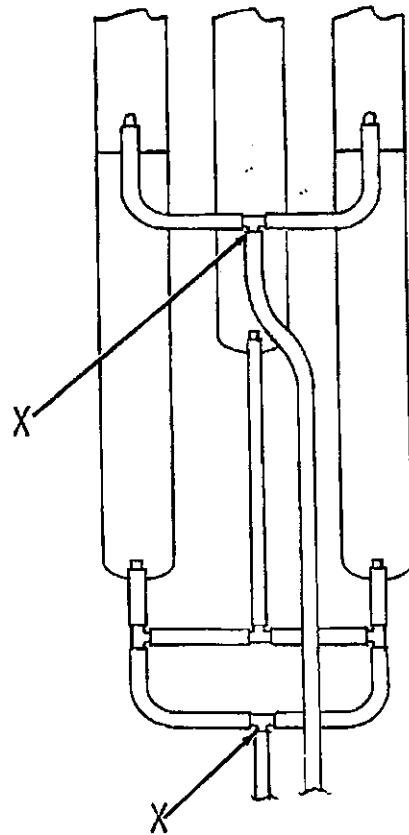
6000C



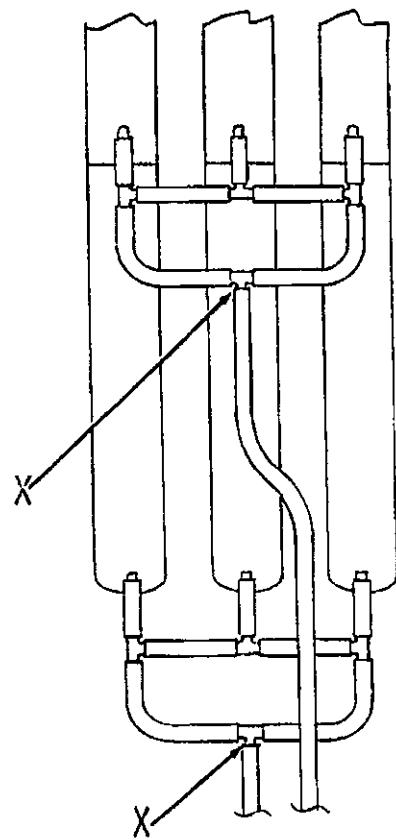
8000C



10000C



12000C



15000C

FIGURE 7. HOSE CONNECTIONS

SECTION II
INSTALLATION

1. (ALL) Move the boat into the slip and position it with the bow about 12 inches back from the front of the slip. Hold boat in this position.
2. (ALL) Locate any mark, on the dock, the location of the bottom of the boat's transom.
3. (ALL) Move the boat out of the slip and move in the hoist.
4. (ALL) Position the hoist with the rear of the transom pads (21) or the hull support pads (23) even with the mark made in step 2.
5. (ALL) Mark on the dock, the location for all four dock brackets. Note that the right side dock brackets are five inches forward of those on the left side.
6. (ALL) Remove angle (26) or strut (31) from all four dock brackets (27). Retain angle or strut and hardware for reinstallation. (Figure 8, 9)
7. (ALL) Install the four dock brackets using two grip tabs (30) and two 1/2 x 1 carriage bolts, nuts, and lockwashers as shown in figure 8. Tighten the 5/8 inch nuts on the allthread rods snug (one or more dock brackets may have to be moved slightly later).
8. (10, 12, 15) Reinstall the angles (26), removed in step 6, with the beveled end down.

9. (10, 12, 15) (See Figure 6) Insert two 5/8 x 1 1/2 inch bolts through each cable bracket (20) with the threads toward the flat side.
10. (10, 12, 15) (See Figure 6) Using two cable clamps (28) for each cable bracket (20) attach the brackets loosely to cable (16). Do not tighten. Note that the left side brackets attach to the forward cables and the right side attach to the rear cables.
11. (10, 12, 15) Install a guide bracket (29) to each cable bracket (20), capturing the cable support (9). Attach each with two 1/2 x 1 1/2 inch bolts, nuts, and lockwashers.
12. (10, 12, 15) Loosen the cable support (9) attach bolts and slide the cable supports out equidistance until the cable brackets (20) are against the dock bracket angle (26).
13. (10, 12, 15) Tighten the cable support (9) attach bolts, making certain the cable supports are still vertical and parallel.
14. (10, 12, 15) Slide the brackets (20) down the cables (16) until they are against the stops on cable supports (9).
15. (4, 6, 8, 8-2T) Reinstall the strut (31) back onto dock brackets (27) with opening of strut facing to the front of the slip on the left side and to the rear of the slip on the right side.
16. (4, 6, 8, 8-2T) (See Figure 10) Using two cable clamps (28) for each cable bracket (32), place cable bracket around slide rod with flag away from the strut (31) and attach to cable. Do not tighten. Note that the left side brackets attach to

the forward cables and the right side attach to the rear cables. Install spacer (34) into cable bracket with 1/2" x 2 1/2" bolts, lockwashers and b-line nuts (33). Do not tighten.

17. (ALL) Remove the cover from the control assembly and attach the internal portion to the floor of the dock. It should be mounted within easy reach of the bow of the boat.
18. (ALL) (See Figure 7) Complete the hose connections between the points marked X and the control assembly. Note that there are two valves provided for the 10, 12, and 15 thousand hoists. The left is for the front compartments and the right is for the rear.
19. (ALL) Connect the control unit to a 115 VAC source and momentarily actuate the switch to verify that power is available.
20. (4, 6, 8, 8-2T) Move the valve control handle to LAUNCH and lower rear of hoist until approximately seven inches of tank remains out of the water. Close the valve.
21. (4, 6, 8, 8-2T) Attach the rear cable brackets (32) to the dock bracket by sliding the B-line nuts attached to the brackets into the struts until they reach the stops on the cable supports. Tighten the B-line nuts to 60 ft. lbs. These nuts are self-aligning in the strut. Note, brackets should be positioned the same distance from the water.

22. (4, 6, 8, 8-2T) Repeat Steps 20 & 21 at the front of the hoist.
23. (10, 12, 15) Move both valve control handles to LAUNCH and lower rear of hoist until approximately nine inches of tank remains out of the water. Close the valves.
24. (10, 12, 15) Attach the REAR cable brackets (20) to the dock bracket angle (26) using the two 5/8 inch bolts inserted in step 9, and two 5/8 inch nuts and lockwashers. Locate cable brackets approximately the same distance from the water.
25. (10, 12, 15) Repeat steps 23 & 24 at the front of the hoist.
26. (ALL) Blow the hoist up until it is snug against the stops.
27. (ALL) Using turnbuckle (17), tighten the cable until it can be deflected easily three to five inches.
28. (ALL) Tighten cable clamps (28).
29. (ALL) Lower the hoist enough to allow the boat to pass over the pads (SEE OPERATION).
30. (ALL) Bring the boat back into the slip and position it as it was in step 1.
31. (ALL) Hold the boat in position and start raising the hoist.
(SEE OPERATION).
32. (ALL) Raise the hoist approximately 12 inches and stop the blower and close the valves.

33. (ALL) Measure from the water surface to a common point at all four corners to make certain the hoist is still level within one inch. If not, lower the hoist and move the boat either forward or aft. Repeat steps 31, 32, 33 until hoist is level.
34. (ALL) Continue raising the hoist until it is snug against the stops. Make certain it is against all four stops. If not, remove boat and raise the hoist. Move all four stops an equidistance toward water. Raise boat again.
35. (ALL) Check that the pads fit the hull properly and are not on a lifting strake. They may need to be moved in or out.
36. (ALL) Lower the hoist until just before the boat floats free. Stop the hoist.
37. (ALL) Form a loop (6-8 inches) in one end of each guide rope.
38. (ALL) Pull each rope as tight as possible and tie to a post on each side of the slip, as near the bow of the boat as possible, and about five feet above the water.

NOTE

If no posts are available, an alternate method is to tie to the front crossmember of the hoist.

39. (ALL) Raise the boat back full up.
40. (ALL) Install the control assembly cover.
41. (10, 12, 15) Install the cable support shields.
42. (ALL) Tighten all dock brackets (27).
43. (ALL) Lag bolt (or equivalent) the upper dock brackets to the dock floor.

SECTION III
OPERATION

NOTE

Operation of the hoist is very simple and easy. Just follow the steps below.

TO LAUNCH THE BOAT

1. Move the valve control handle (or handles) to LAUNCH.
2. When the hoist is completely down (no more air exhausting from the control) remove the guide ropes from the rear cleats and lay them on the dock.
3. The boat is now free in the slip and you are ready to go boating.

TO LIFT THE BOAT

1. When you return from boating bring the boat back into the slip.
2. Place the loops in the guide ropes over the rear cleats on the boat.
3. Gently push back on the bow of the boat until the guide ropes are taut. This will properly locate the boat over the hoist.
4. While pressing back on the boat, place the blower switch to ON.
5. When the hoist contacts the boat turn loose of the boat.
6. When the hoist is up solid against the stops, place the switch to OFF and move the valve control handle (or handles) to DRY DOCK.
7. The boat is now in a "dry dock" condition.

SECTION IV
DO'S AND DON'TS

1. DO. Always use the guide ropes. They are required for proper positioning of the boat and if they are not used your warranty is voided.
2. DO. Always raise the hoist if it is not to be used for an extended period of time (more than a day) whether the boat is on it or not. The hoist will survive storms and rough weather much better in the up position.
3. DO. Leave your boat on the hoist during the winter if you desire. Stationary ice will not damage the hoist if it is up.
4. DO. Follow the instructions in this manual and your hoist will give you many years of trouble-free service.
5. DON'T. Operate the blower with the valve closed. Blower damage will result.
6. DON'T. Start the blower while launching the boat. Only open the valve.
7. DON'T. Attempt to raise any boat other than the one the hoist was adjusted for. Hoist damage could result. If you trade boats, contact your hoist dealer and he will have your hoist readjusted.
8. DON'T. Pushback excessively on the boat while lifting. Push back just enough to tighten both guide ropes and only until the hoist contacts the boat.

PARTS LIST

<u>Item</u>	<u>Part Number</u>	<u>Nomenclature</u>
26	FD-491	Vertical Angle
27	MA-479	Dock Bracket Assembly - HD
	consists of:	
	WA-3067	Upper Bracket
	WA-3080	Lower Bracket
	FD-491	Vertical Angle
30	FD-412	Grip Tab

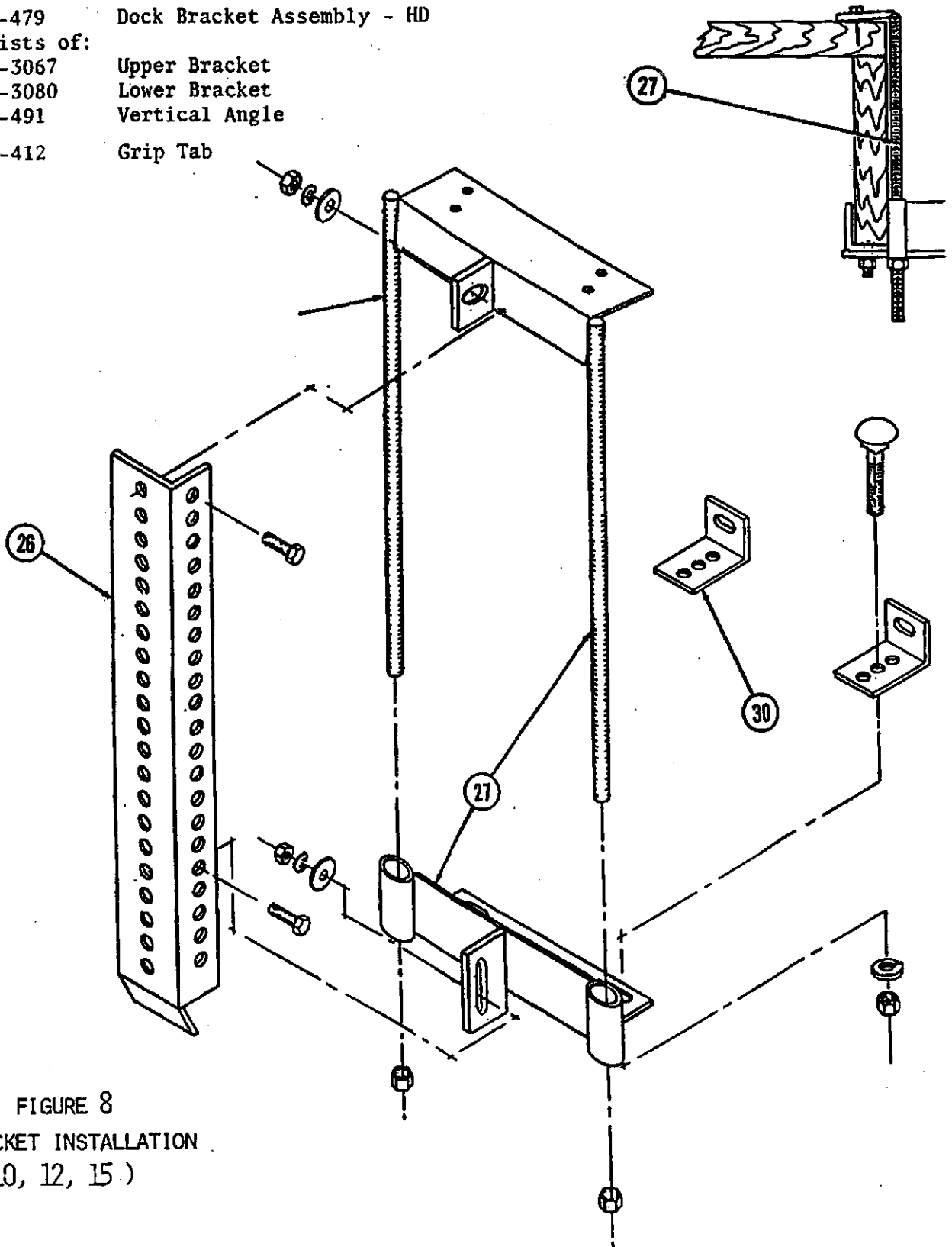


FIGURE 8
DOCK BRACKET INSTALLATION
(10, 12, 15)

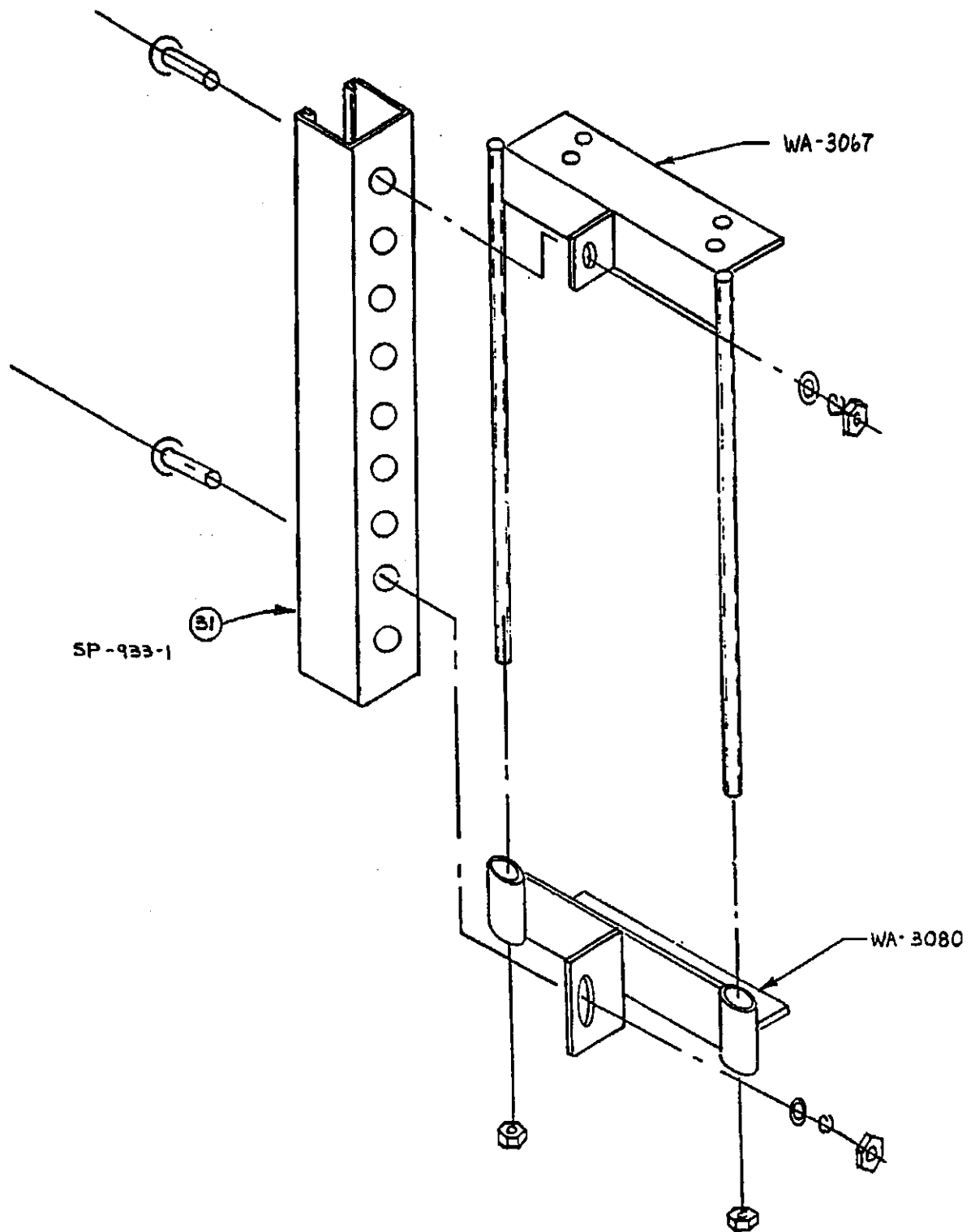


FIGURE 9.
DOCK BRACKET-BL
(4, 6, 8, 8-2T)

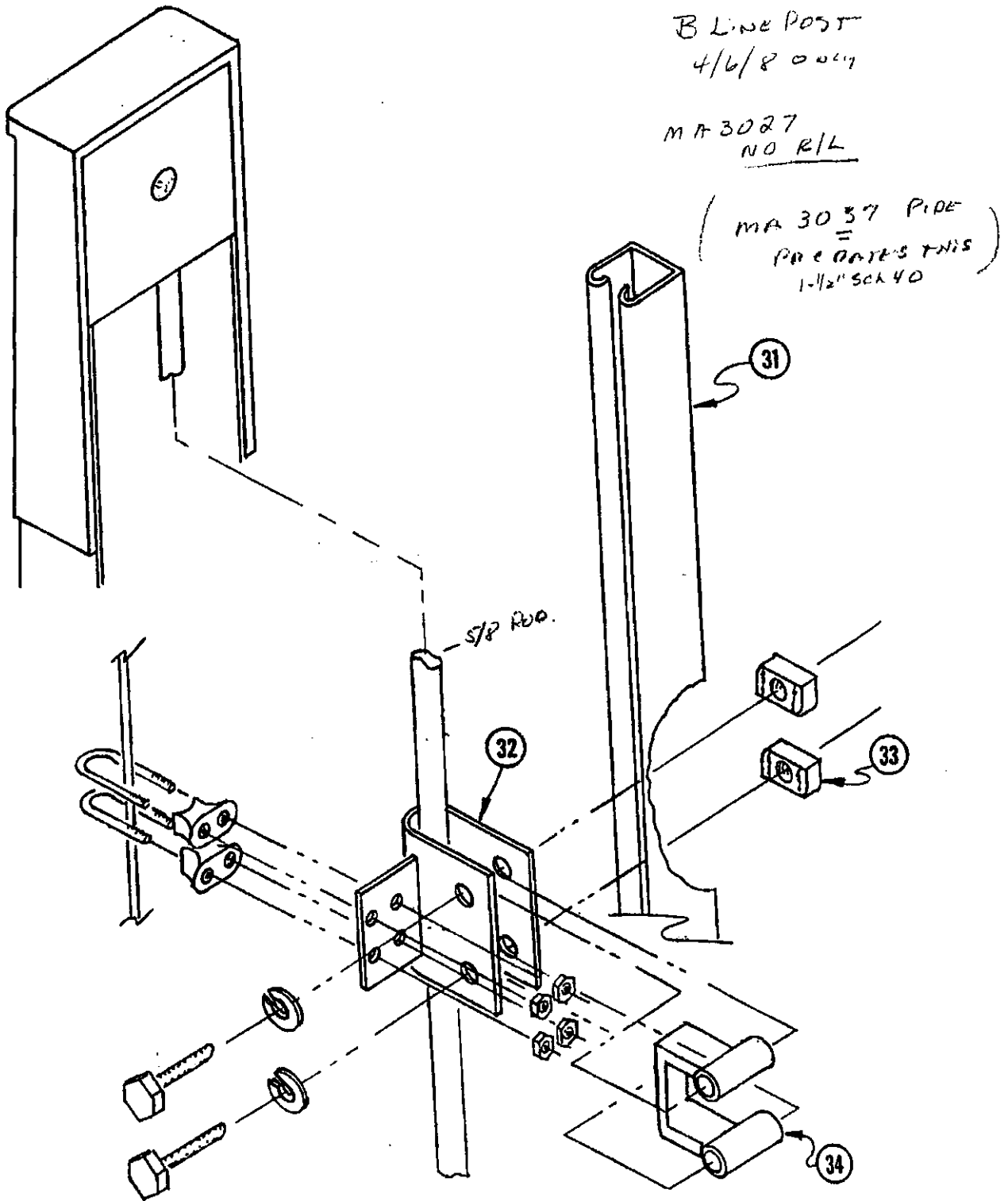


FIGURE 10

PARTS LIST
MODEL 4000C

<u>TEM</u>	<u>PART NUMBER</u>	<u>NOMENCLATURE</u>	<u>QTY.</u>
1	WA-501	Upper Tank Bracket - 24"	4
2	FD-596	Lower Tank Bracket - 24" x 2"	8
3	FD-506-10	End Channel - 7'11"	2
4	FD-506-20	End Channel - 6'8"	2
5	MA-251-3	V-Bracket Assembly w/Plate	1
6		Not Used	
7		Not Used	
8		Not Used	
9	(4302700) MA-3027	Cable Support Assembly	4
10	WA-3041-10	Side Rail - 114½"	2
11		Not Used	
12		Not Used	
13		Not Used	
14		Not Used	
15		Not Used	
16	SP-9040-42	¼" Stainless Steel Cable x 86' LG	1
17	SP-9016-2	Turnbuckle	1
18	SP-9015-1	Cable Thimble - ½"	2
19	SP-9014-1	Cable Clamp - ½"	4
21	MA-206	Transom Pad Assembly - LH	1
	MA-206-1	Transom Pad Assembly - RH	1
22		Not Used	
23		Not Used	
24		Not Used	
25		Not Used	
26		Not Used	
27		Not Used	
28	SP-9014-1	Cable Clamp - ½"	8
29	FD-3013	Not Used	4
30		See Figure 8	
31	SP-933-1	Strut	4
32	WA-3091	Cable Bracket	4
33	SP-931	B-Line Nut	8
34	WA-3092	Bracket Spacer	4

} see Figure 10

PARTS LIST
MODEL 6000C/8000C

<u>ITEM</u>	<u>PART NUMBER</u>	<u>NOMENCLATURE</u>	<u>QTY.</u>
1	WA-501	Upper Tank Bracket - 24"	6
2	FD-596	Lower Tank Bracket - 24" x 2"	12
3	FD-506-10	End Channel - 7'11"	2
4	FD-506-20	End Channel - 6'8"	2
5	MA-270	V-Bracket Assembly	1
6		Not Used	
7		Not Used	
8		Not Used	
9	MA-3027	Cable Support Assembly -	4
10	WA-3041-20	Side Rail - 137"	2
11		Not Used	
12		Not Used	
13		Not Used	
14		Not Used	
15		Not Used	
16	SP-9040-43	¼" Stainless Steel Cable x 94' LG	1
17	SP-9016-2	Turnbuckle	1
18	SP-9015-1	Cable Thimble - ¼"	2
19	SP-9014-1	Cable Clamp - ¼"	4
21		Not Used	
22	WA-301	Hull Support Column - LH	2
	WA-301-1	Hull Support Column - RH	2
23	MA-256	Hull Support Pad - 14'	2
24	FD-317	Hull Support Brace - 27¼"	2
25		Not Used	
26		Not Used	
27		Not Used	
28	SP-9014-1	Cable Clamp - ¼"	8
29	FD-3013	Not Used	4
30		See Figure 8	
31	SP-933-1	Strut	4
32	WA-3091	Cable Bracket	4
33	SP-951	B-Line Nut	8
34	WA-5092	Bracket Spacer	4

} see Figure 10

PARTS LIST
MODEL 800C2T

<u>ITEM</u>	<u>PART NUMBER</u>	<u>NOMENCLATURE</u>	<u>QTY.</u>
1	WA-597	Upper Tank Bracket - 32"	4
2	FD-593	Lower Tank Bracket - 32"	4
3	FD-506-10	End Channel - 7'11"	2
4	FD-506-20	End Channel - 6'8"	2
5	MA-270	V-Bracket Assembly	1
6		Not Used	
7		Not Used	
8		Not Used	
9	MA-3027	Cable Support Assembly	4
10	WA-3041-20	Side Rail - 137"	2
11		Not Used	
12		Not Used	
13		Not Used	
14		Not Used	
15		Not Used	
16	SP-9040-43	½" Stainless Steel Cable x 94' LG	1
17	SP-9016-2	Turnbuckle	1
18	SP-9015-1	Thimble - ½"	2
19	SP-9014-1	Cable Clamp - ½"	4
21		Not Used	
22	WA-301	Hull Support Column - LH	2
	WA-301-1	Hull Support Column - RH	2
23	MA-256	Hull Support Pad - 14'	2
24	FD-317	Hull Support Brace - 27½"	2
25		Not Used	
26		Not Used	
27		Not Used	
28	SP-9014-1	Cable Clamp - ½"	8
29	FD-3013	Not Used	4
30		See Figure 8	
31	SP-933-1	Strut	4
32	WA-3091	Cable Bracket	4
33	SP-931	B-Line Nut	8
34	WA-3092	Bracket Spacer	4

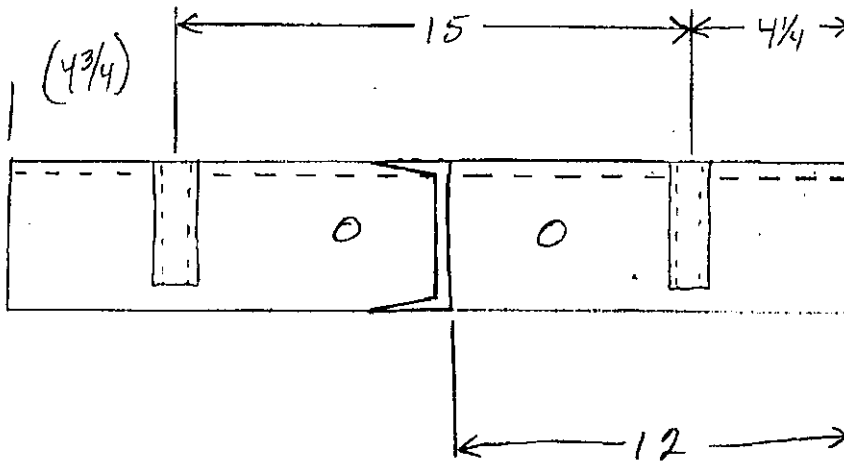
} see Figure 10

PARTS LIST
MODEL 10000C

<u>ITEM</u>	<u>PART NUMBER</u>	<u>NOMENCLATURE</u>	<u>QTY.</u>
1	WA-597	Upper Tank Bracket	6
2	FD-593	Lower Tank Bracket	6
3		Not Used	
4		Not Used	
5	MA-290	V-Bracket	1
6	FD-560	Keel Spanner Channel - 37½"	4
7	FD-5003-10	End Channel - 5" x 9'2"	2
8		Not Used	
9	MA-3001	Cable Support Assembly - LH	2
	MA-3002	Cable Support Assembly - RH	2
10	FD-3015	Side Channel - 3" x 184"	2
11	WA-3051	Center Channel Mount	2
12		Not Used	
13		Not Used	
14	FD-506-10	Center Channel - 7'11"	1
15	FD-506-20	Center Channel - 6'8"	1
16	SP-9040-20	3/8" Stainless Steel Cable x 125' LG	1
17	SP-9016-1	Turnbuckle	1
18	SP-9015-2	Thimble - 3/8"	2
19	SP-9014-2	Cable Clamp - 3/8"	4
20	WA-3014	Cable Bracket	4
21		Not Used	
22	WA-301	Hull Support Column - LH	2
	WA-301-1	Hull Support Column - RH	2
23	MA-252	Hull Pad - 9'	2
24	FD-317	Hull Support Brace	2
25	FD-323	Hull Support Riser - LH	1
	FD-323-1	Hull Support Riser - RH	1
26		See Figure 8	
27		See Figure 8	
28	SP-9014-2	Cable Clamp - 3/8"	8
29	FD-3015	Guide Bracket	4
30		See Figure 8	

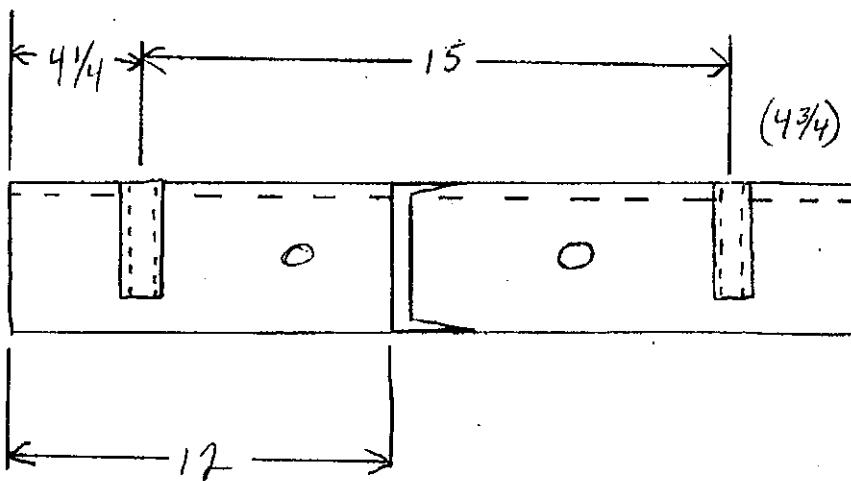
20-30 C DOCK BRKT PARTS

UPPER 4351802



DATUM
END

LOWER 4351803



DATUM
END

FLAT OF 3" CHANNEL TAB FACES
THE DATUM END !!

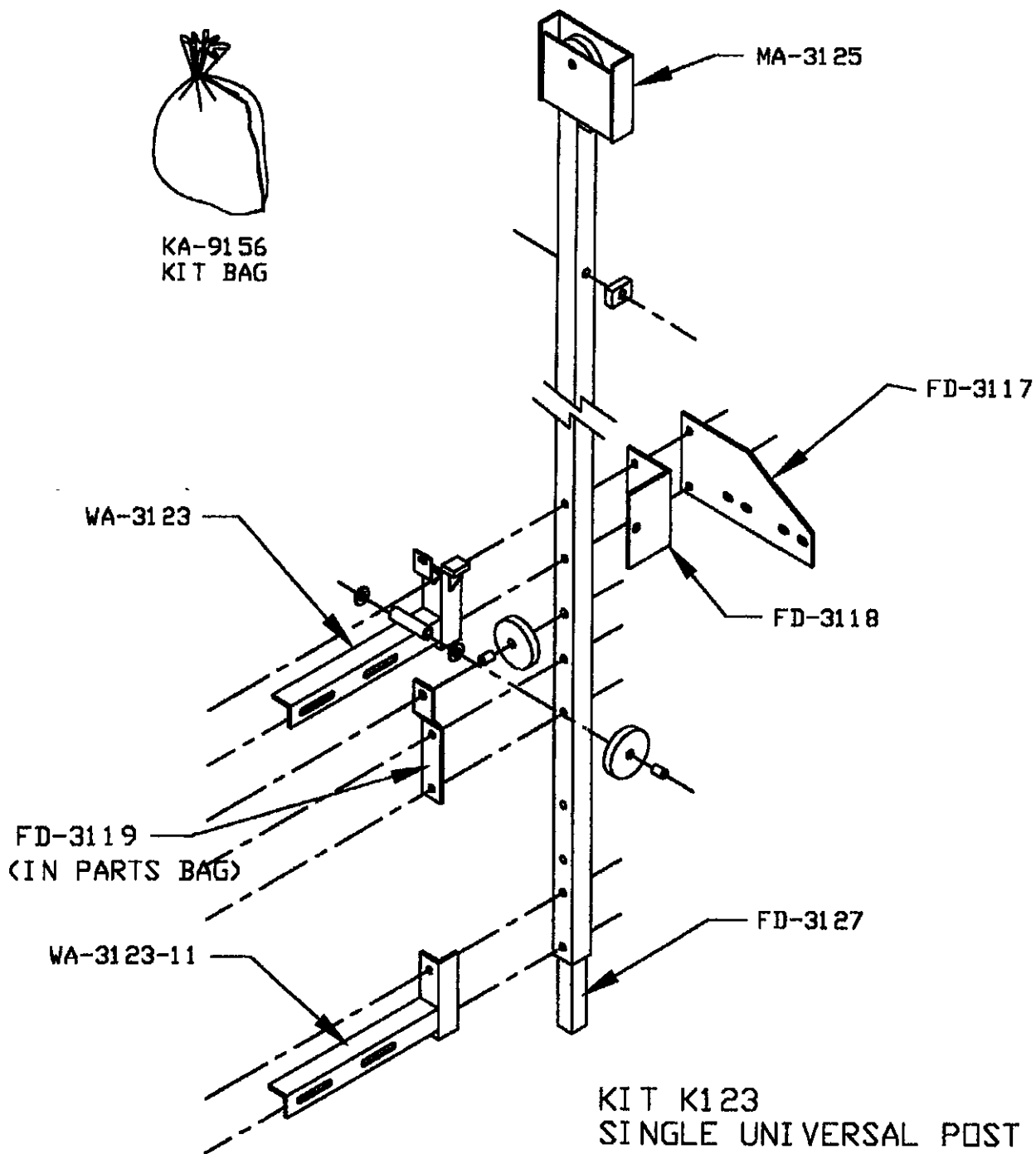
22-141 50 SHEETS
22-142 100 SHEETS
22-144 200 SHEETS



SINGLE UNIVERSAL POST (8, 10, 12, and 15 'C'-MODELS)



KA-9156
KIT BAG



KIT K123
SINGLE UNIVERSAL POST
RH ASSEMBLY SHOWN